

## 10/100BASE-TX TO 100BASE-FX Switching Converter

### DESCRIPTION:

All Fast Ethernet Converters from Optichina are compact size units with metal cases to fulfill the FCC emission standards. The 100Base-TX and the 100Base-FX converter feature LED diagnostics for Power, Activity, Link and Full Duplex / Half Duplex operation. All converters are fully compliant with the IEEE 802.3 & 802.3u Fast Ethernet standards and feature one STP-RJ45 10/100Base-TX port as well as one Fiber Optic 100Base-FX (SC/ST/MTRJ) port. In multi mode applications distances up to 100,000m/300,000m can be achieved. Each unit is powered by an external power supply. Installation of the Fast Ethernet converter is simple and straightforward. The powerful features are as 10/100 Auto Negotiation, Auto cross over for TP port, Fiber Link Alarm, Voltage supervisor, and support switch mode & pure converter mode.



### FEATURES:

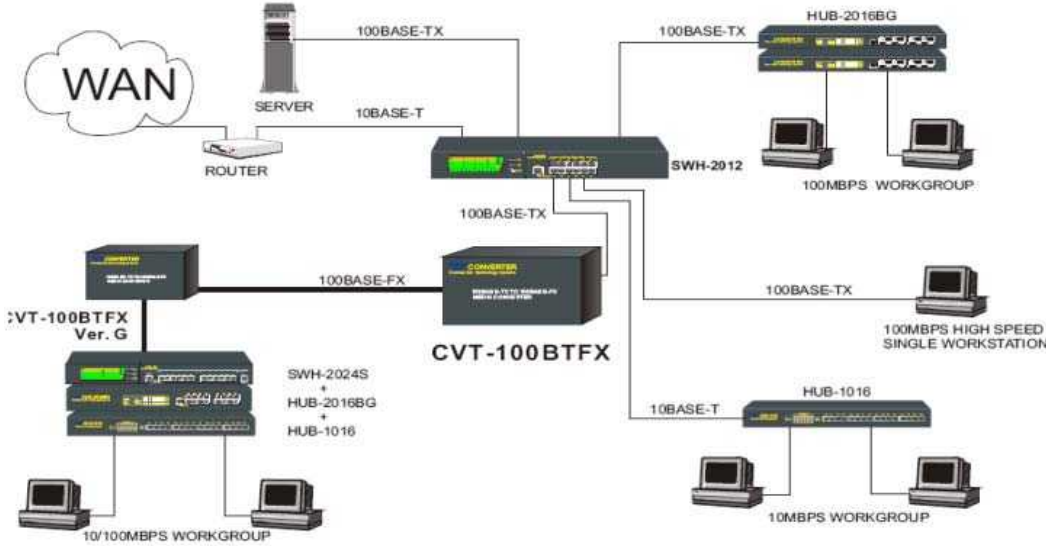
- 100BTFC: One 10/100Base-TX (RJ-45/STP) Interface, One 100Base-FX (FO-SC) Interface
- 100BTFT: One 10/100Base-TX (RJ-45/STP) Interface, One 100Base-FX (FO-ST) Interface
- 100BTfMR: One 10/100Base-TX (RJ-45/STP) Interface, One 100Base-FX (FO-MTRJ) Interface
- 100BTFC(SM-10/20/25/40/60/80/100): One 10/100Base-TX (RJ-45/STP) Interface, One 100Base-FX (FO-SC) Singlemode Interface
- All Converters comply with IEEE 802.3 & 802.3u Fast Ethernet Standards
- LED Indication: Power, FDX, TP 100, TP Link/Act, Fiber 100, Fiber Link/ACT
- 10/100Mbps Auto Negotiation
- Auto cross over for TP port
- Support Link Alarm
- Support Switch mode & Pure converter mode
- Dual Port 10/100Mbps Switch inside
- Metal Case
- 10/100 Mbps Auto Negotiation
- Voltage supervisor

### Fiber Optic Details:

Connector Type	Fiber Type	Wavelength	Typical Distance	Min TX PWR	Max TX PWR	Sensitivity	Link Budget
ST/SC	Multimode	850nm	2km	-19.0dBm	-14.0dBm	-30.0dBm	11.0dB
MTRJ	Multimode	850nm	2km	-19.0dBm	-14.0dBm	-30.0dBm	11.0dB
SC	Singlemode	1310nm	10km	-18.0dBm	-7.0dBm	-28.0dBm	10.0dB
SC	Singlemode	1310nm	20km	-20.0dBm	-7.0dBm	-32.0dBm	14.0dB
SC	Singlemode	1310nm	25km	-15.0dBm	-7.0dBm	-34.0dBm	19.0dB
SC	Singlemode	1310nm	40km	-5.0dBm	0dBm	-34.0dBm	29.0dB
SC	Singlemode	1310nm	60km	-3.0dBm	0dBm	-38.0dBm	35.0dB
SC	Singlemode	1310nm	80km	-2.0dBm	3dBm	-37.0dBm	35.0dB
SC	Singlemode	1550nm	100km	-5.0dBm	0dBm	-36.0dBm	31.0dB

# 10/100BASE-TX TO 100BASE-FX Switching Converter

## APPLICATION:



## SPECIFICATION:

Standards:	Standards:	Dimensions:
IEEE 802.3 10Base-T	IEEE 802.3 10Base-T	Dimensions: 71x 97x 26 (WxDxH)
IEEE 802.3u 100Base-TX & 100Base-FX	IEEE 802.3u 100Base-TX & 100Base-FX	Weight: 1.0 Kg (Net Weight)
Filtering Rate:	Filtering Rate:	Safety Standards:
Filt. Rate – Ethernet: 14,880 pps	Filt. Rate – Ethernet: 14,880 pps	Electrical: UL , CSA
Filt. Rate – Fast Ethernet: 148,800 pps	Filt. Rate – Fast Ethernet: 148,800 pps	EMI: FCC Part 15 Class A, CE